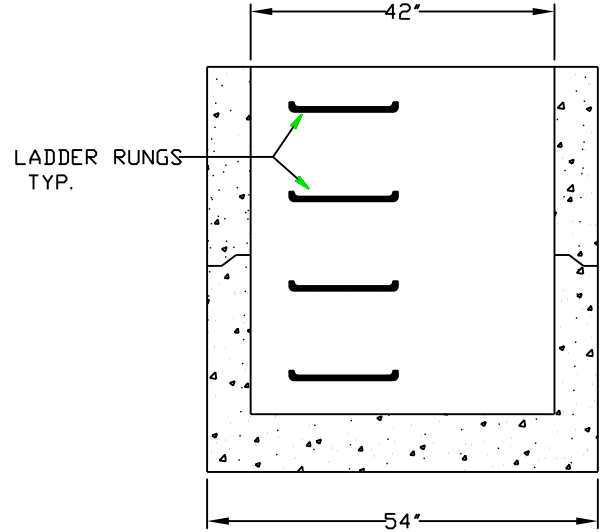
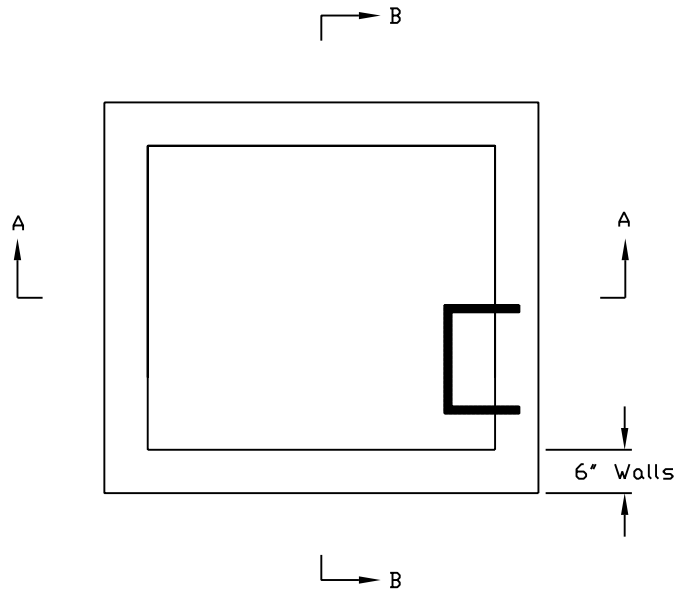


SECTION A-A



SECTION B-B



PLAN

SPECIFICATIONS

B/E - INLET

B/E-INL

Minimum Concrete Strength - 4000 P.S.I. @ 28 Days  
 Reinforcement - WWF 3X6 Spaced at 3" Running Horizontally in Sides  
 #4 Rebar @ 10" O.C. in Bottom

Design - Inlet/Catch Basin to be As Manufactured By:  
**FLEMINGTON PRECAST & SUPPLY, L.L.C.**  
 18 Allen Street, Flemington, NJ 08822-1120  
 Ph. (908) 782-3246 Fax (908) 782-1981