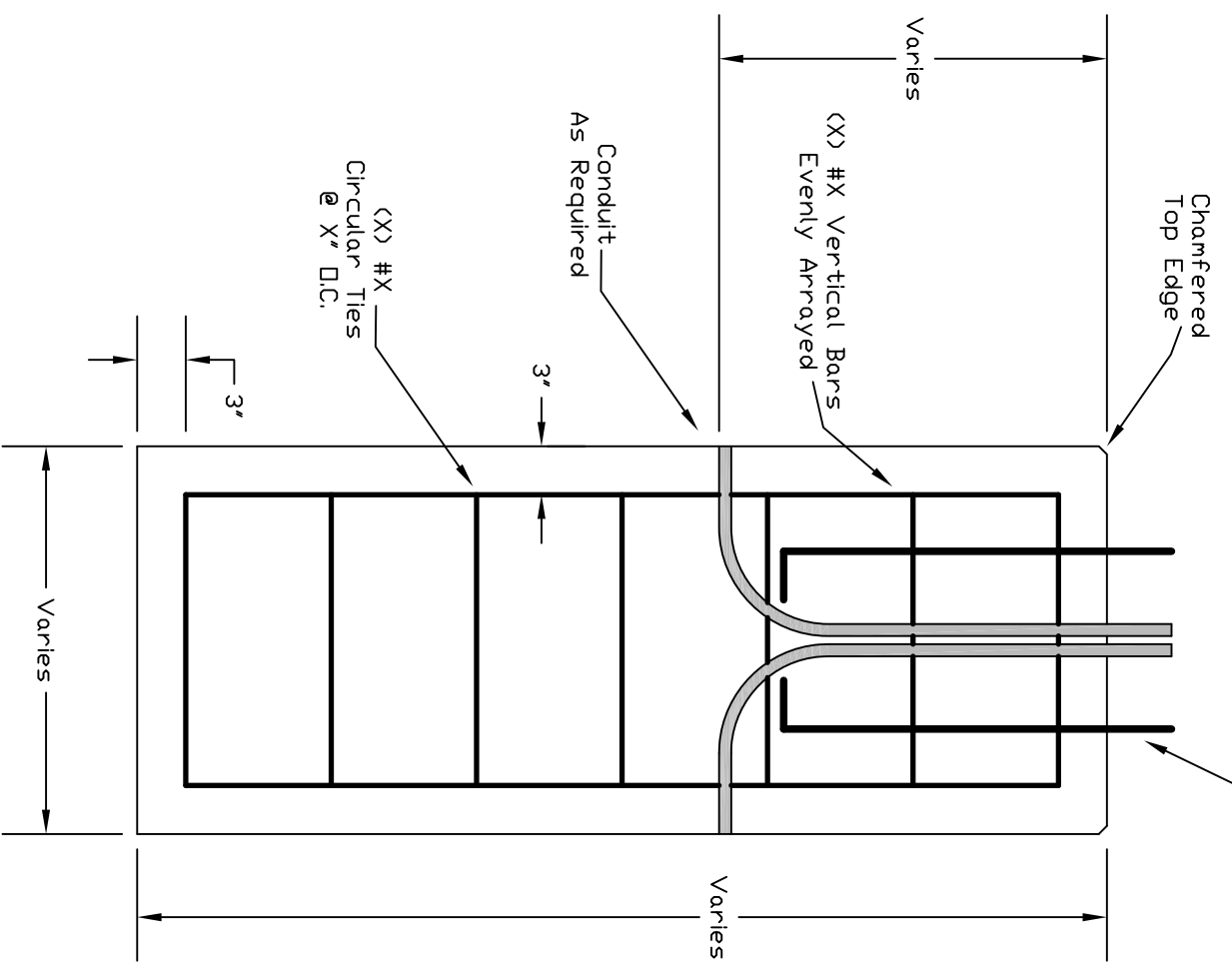
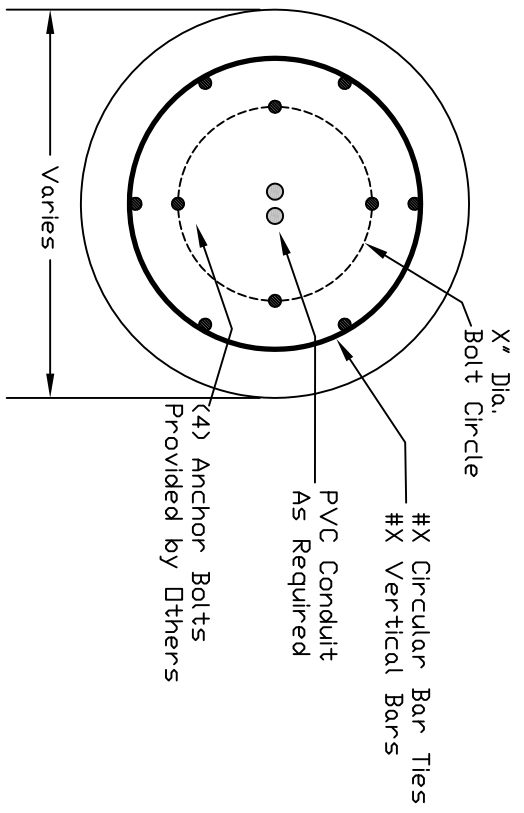


(4) Galv. Anchor Bolts  
Provided by Others



Profile View



Plan View

**Typical Light Pole Base  
Specifications Vary by Job**

Minimum Concrete Strength - 4000 PSI @ 28 Days

Reinforcement - (X) #X Rebar Vertically,

(X) #X Circular Rebar Ties- X" O.C.,

Reinforcement Steel as per ASTTM-A-185 Grade 60

Design - Light Pole Base To Be As Manufactured By:

**Flemington Precast & Supply, LLC**

18 Allen Street, Flemington, NJ 0882-1120  
Phone 908-782-3246 Fax 908-782-1981