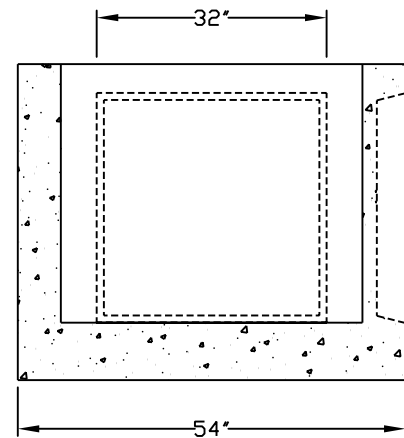
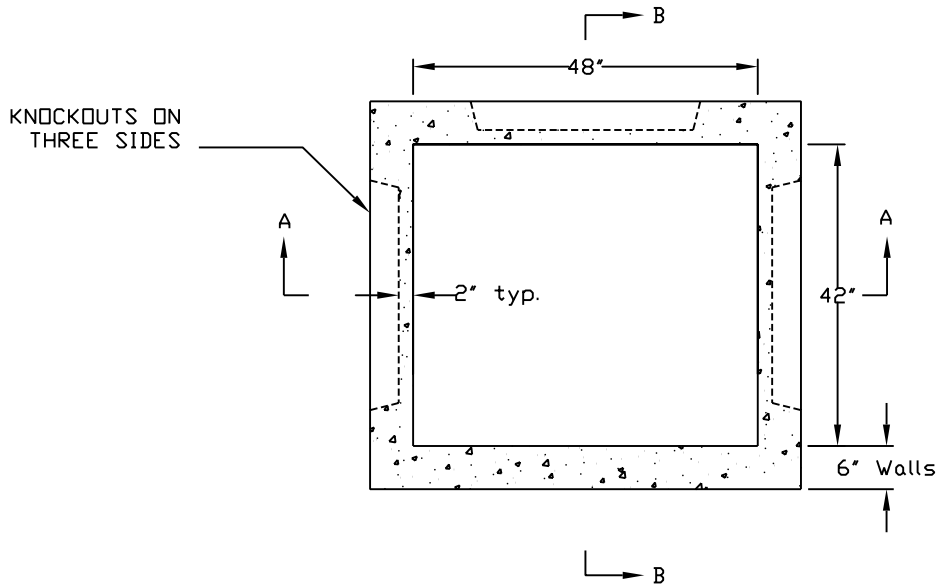


SECTION A-A



SECTION B-B



PLAN

SPECIFICATIONS

SEPTECH™ 36" B/E KNOCK OUT STYLE CATCH BASIN

B/E-36-KOCB

Minimum Concrete Strength - 4000 P.S.I. @ 28 Days
 Reinforcement - WWF 3X6 Spaced at 3" Running Horizontally in Sides
 #4 Rebar @ 10" O.C. in Bottom

Design - Catch Basin to be As Manufactured By:
FLEMINGTON PRECAST & SUPPLY, L.L.C.
 18 Allen Street, Flemington, NJ 08822-1120
 Ph. (908) 782-3246 Fax (908) 782-1981