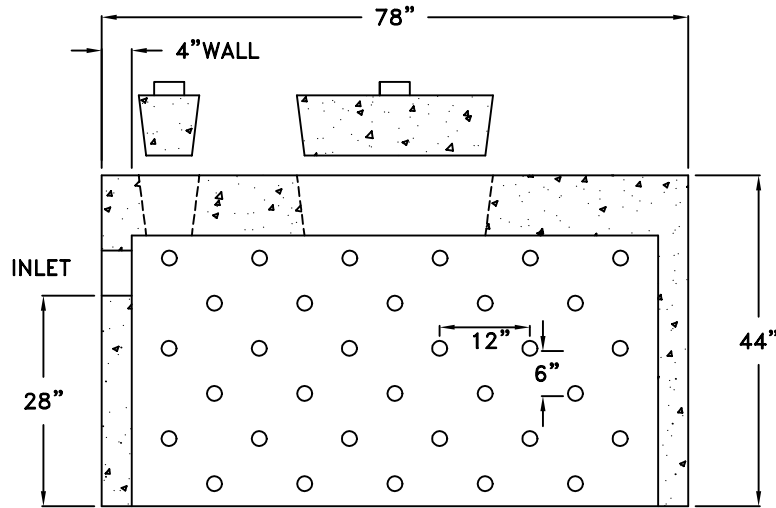


TAPERED HOLES
4" DIA. OUTSIDE
2" DIA. INSIDE



SPECIFICATIONS

44" SEEPAGE TANK WITH 8" LID

SET44HD

Minimum Concrete Strength - 4000 P.S.I. @ 28 Days
Reinforcing Steel - conforms to ASTM A615 & A185
Design - Maximum Earth Cover - 4', HS-20 Loading
Inlet Equipped with 6" Dia. Hole
Seepage Tank To Be As Manufactured By:
FLEMINGTON PRECAST & SUPPLY, L.L.C.
18 Allen Street, Flemington, NJ 08822-1120
Ph. (908) 782-3246 Fax (908) 782-1981